



AUGUR RESOURCES LTD

ABN 79 106 879 690

Collerina Project

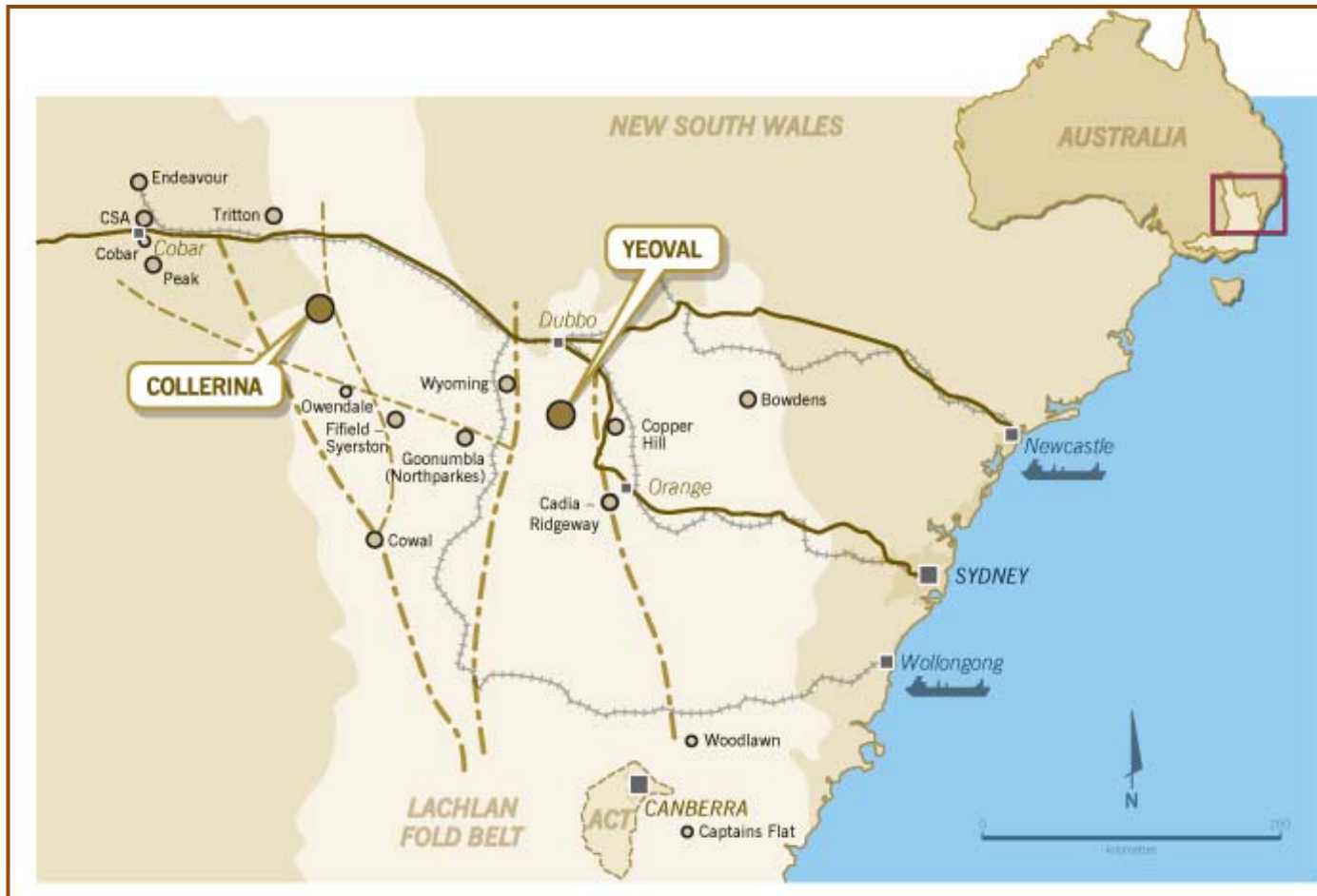
Collerina project



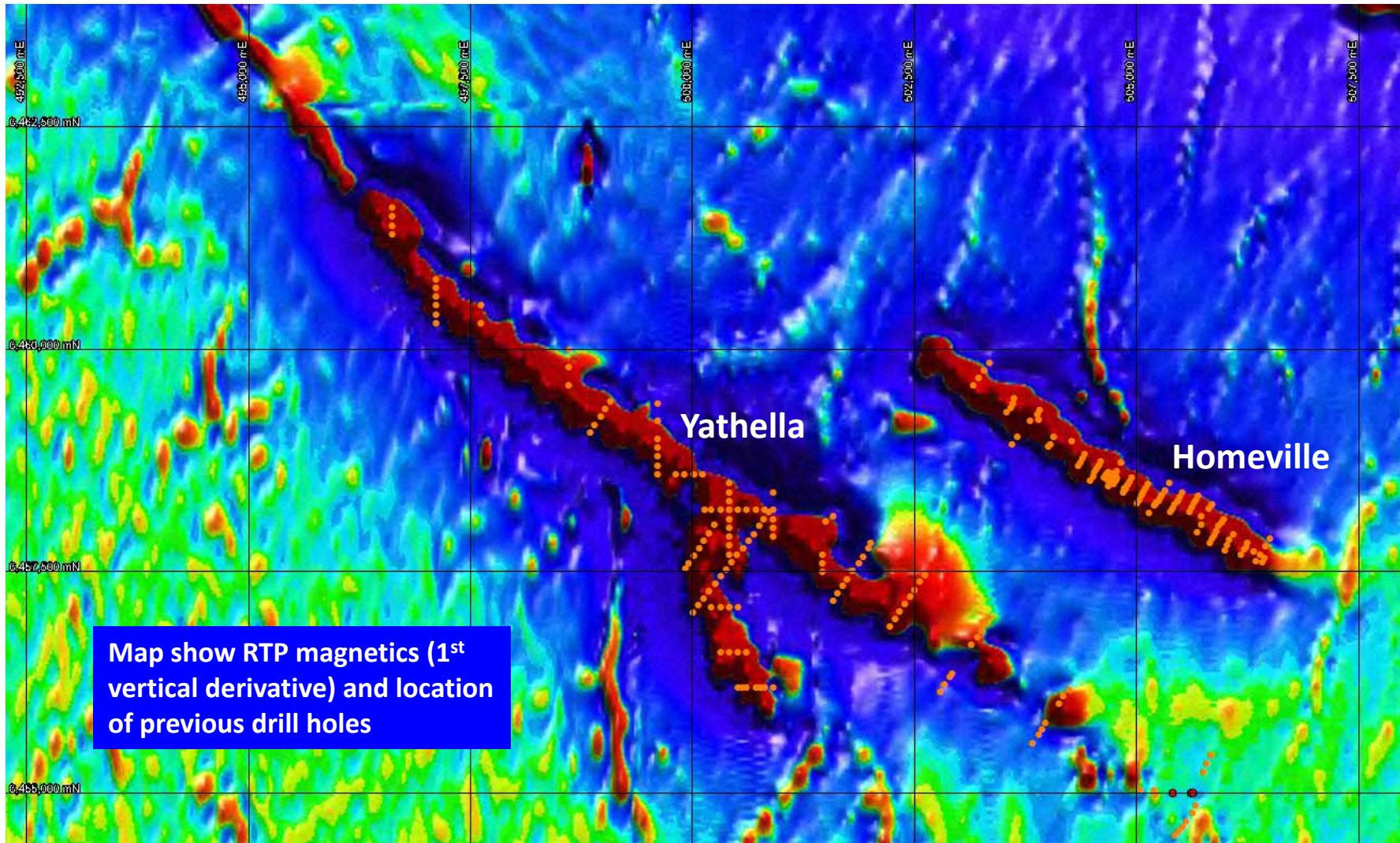
Homeville Deposit

- **16.3 million tonnes** at **0.93% nickel** and **0.05% cobalt** (cut-off 0.7% nickel). See Appendix 1.
- Total resource estimated to contain **151,000 tonnes** of **nickel** and **8,100 tonnes** of **cobalt**.
- Peak Cobalt grades of up to **0.38%** contained within a defined **3.5 km** trend.
- Mineralisation is **at surface** in some areas with an average depth of only 10 metres below surface. Deposit remains **open at depth** and **along strike**.
- Initial counter-current atmospheric leach (CCAL) test work on Homeville laterite ore suggests overall recovery of nickel and cobalt from the ore of **more than 90%** will be achievable, at a low overall acid consumption of less than **730 kg/t ore**.
- Opportunity to leverage **forecast** future **increased cobalt** prices.
- Further test work planned on aluminium to produce **High Purity Alumina (HPA)**, revenues would be far in excess of nickel and cobalt revenues combined.

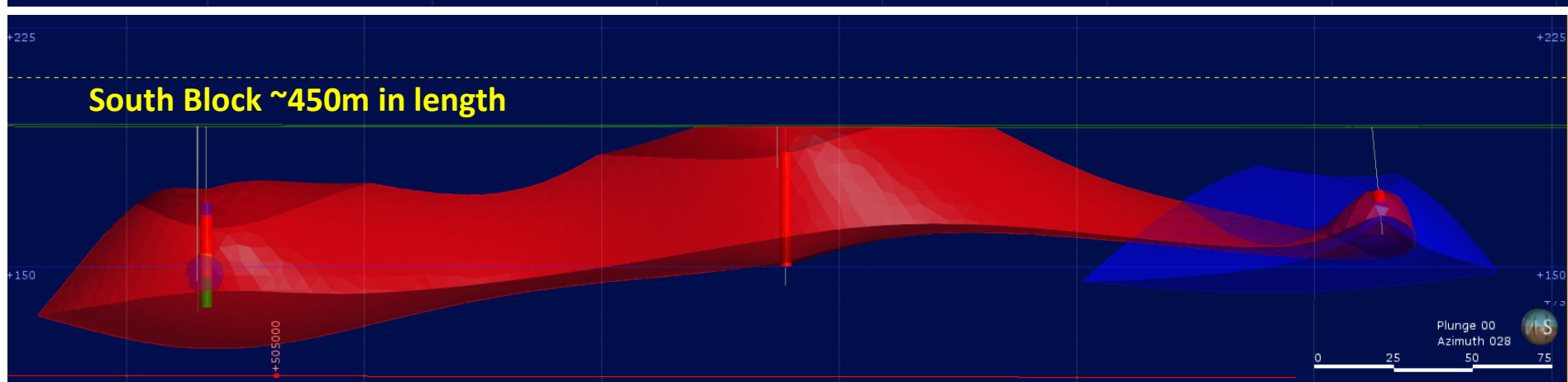
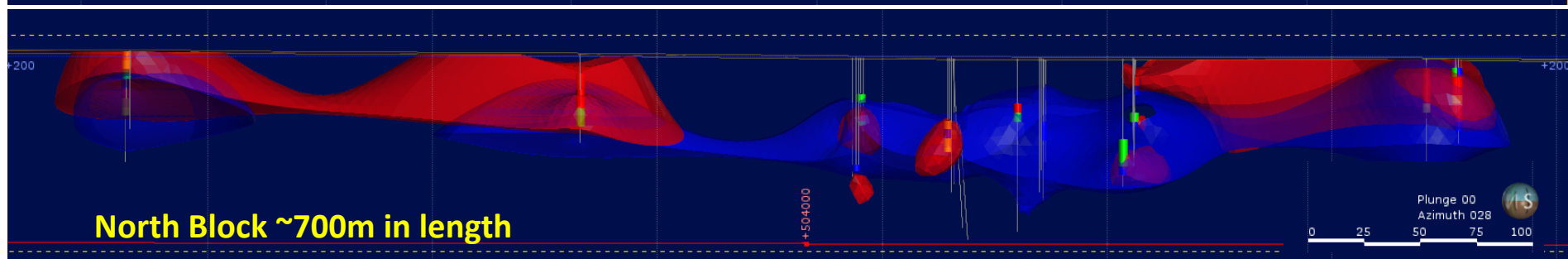
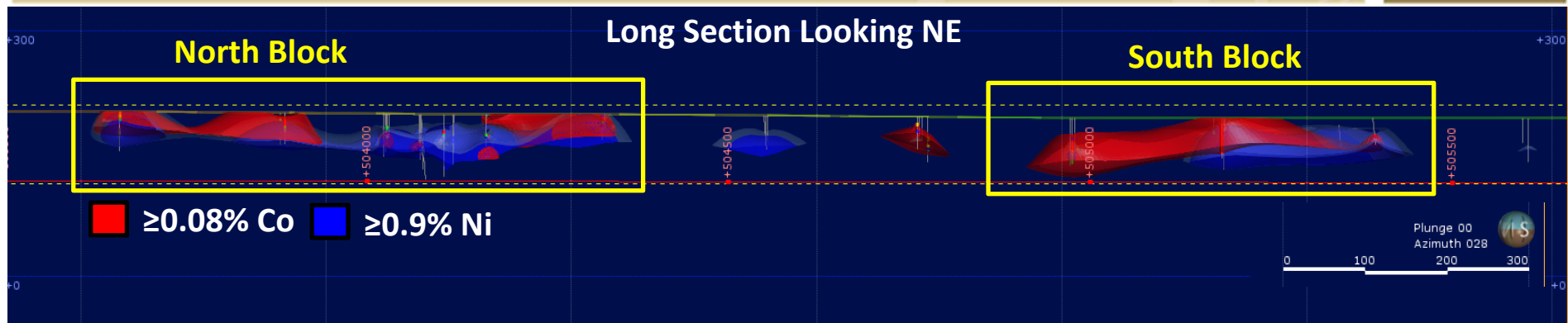
Collerina project location



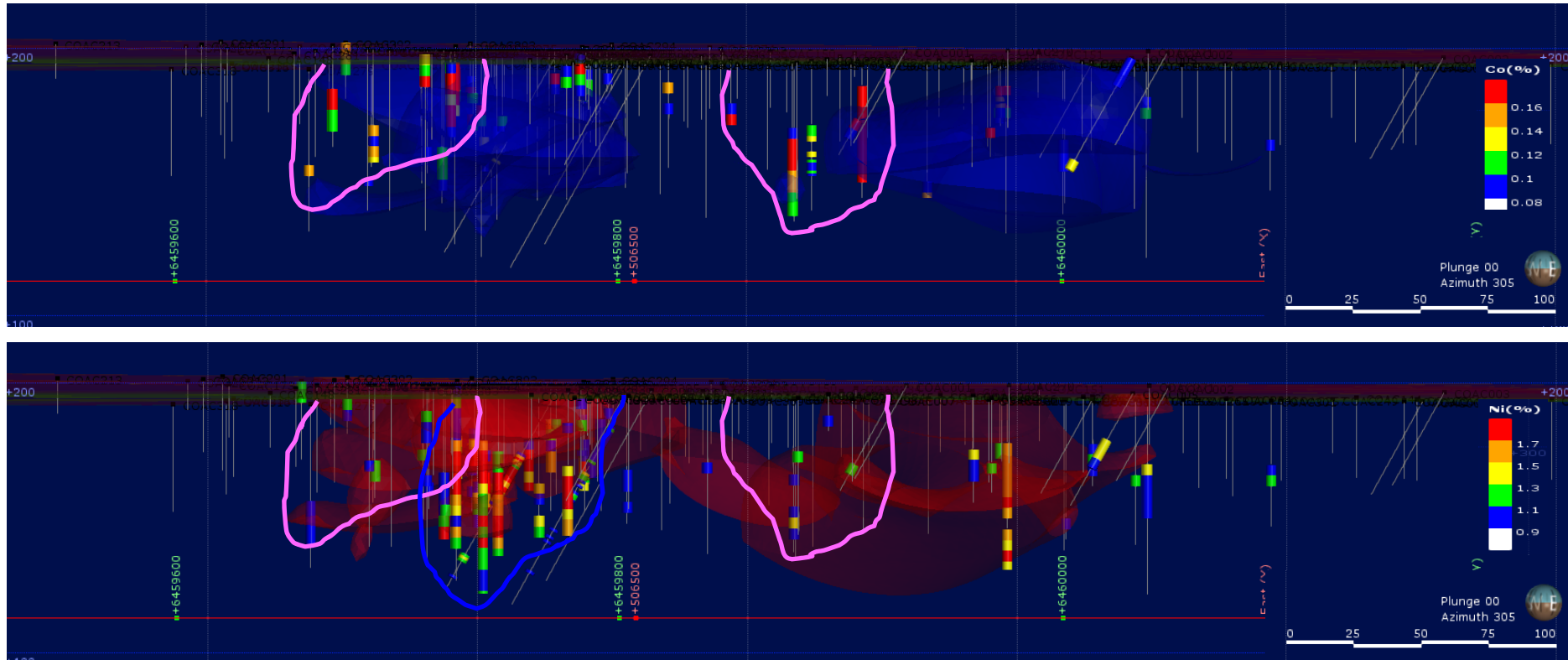
Collerina project previous drilling



Homeville deposit long section

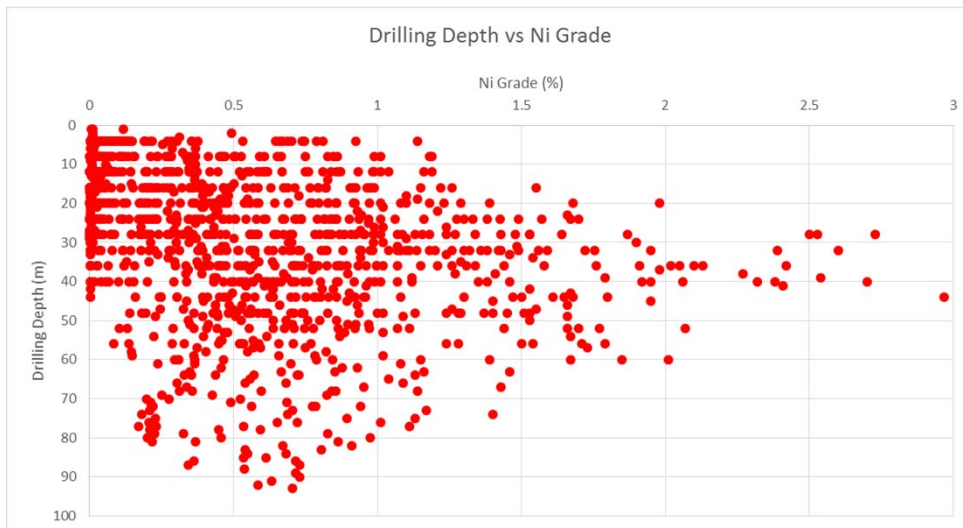
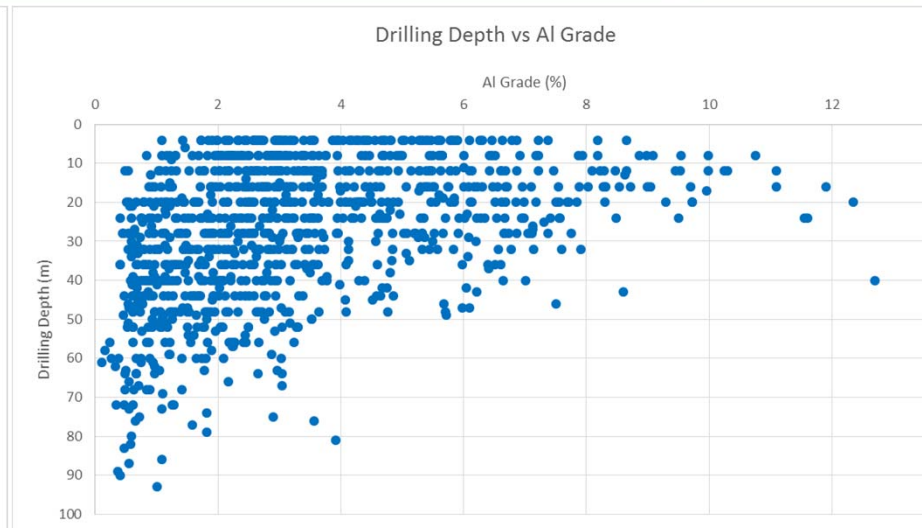
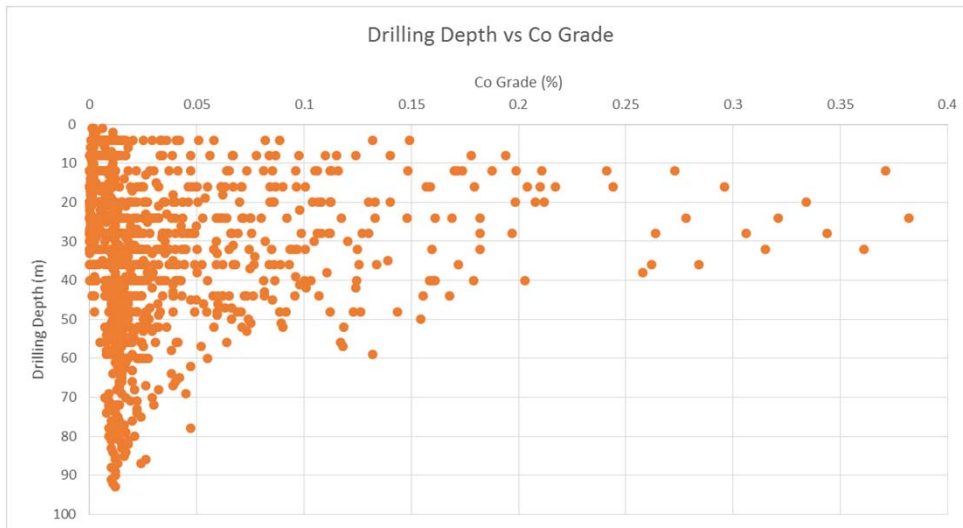


Homeville deposit cross section



Figures shows a NW (302°) looking cross section with an open viewing window so all holes across the Homeville deposit are included. **TOP:** Shows downhole assays for Co and grade shells (blue) for Ni >0.9%. Two Co-rich zones (2 x 75m) over a distance of ~200m are indicated. **BOTTOM:** Shows downhole assays for Ni and grade shells (red) for Co >0.08%. A central Ni-rich zone is indicated with the 2 Co-rich zones situated marginal to the Ni zone. Note that high grade for both elements remains open to depth.

Homeville prospect Al – Co – Ni distribution

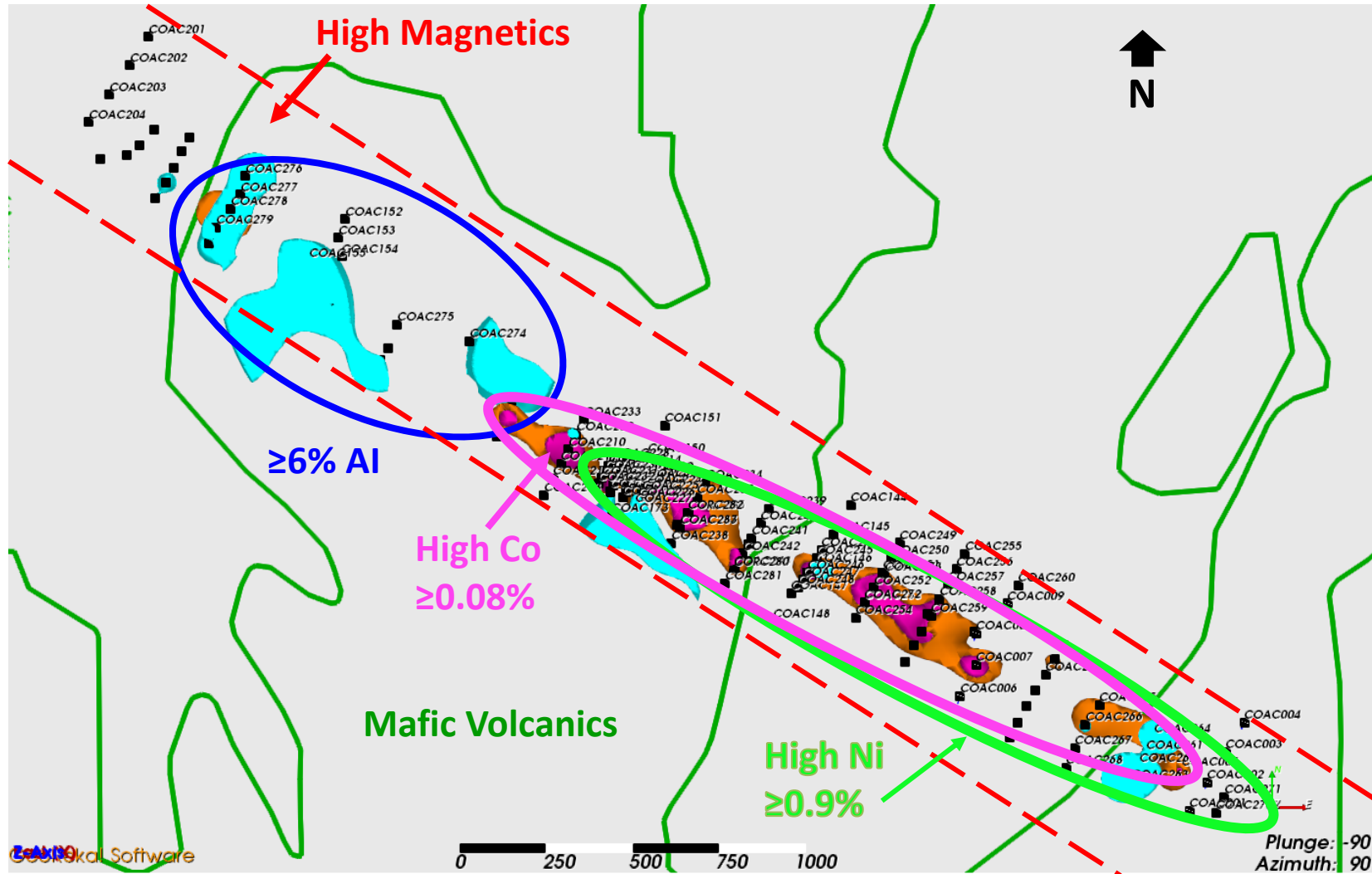


Plot of all available assays relative to depth

- >Co best developed 10 – 40m depth
- >Ni best developed 20 – 60m depth
- >Al best developed 10 – 30m depth

Potential for coincident zones of >Al-Co-Ni

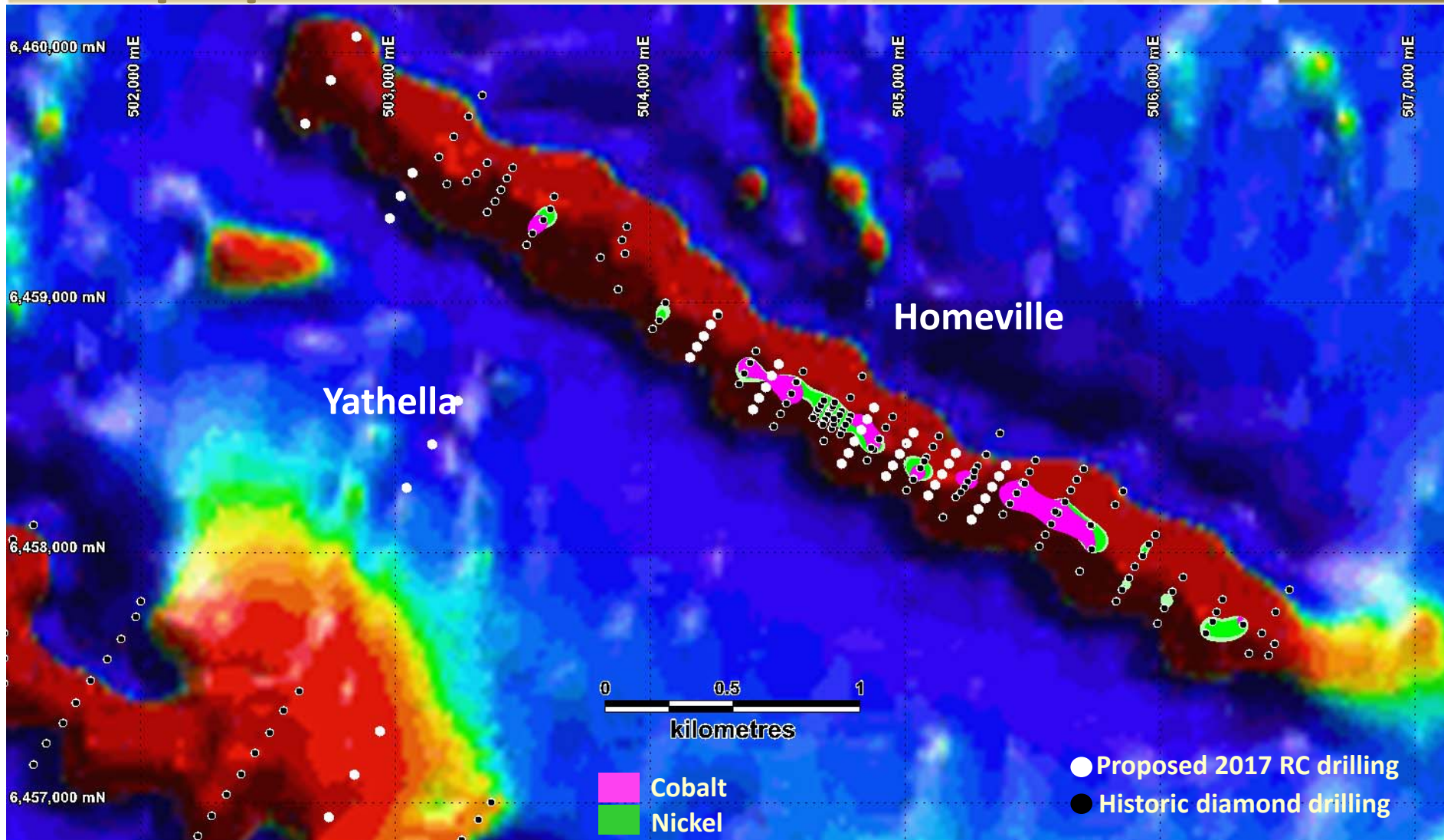
Homeville prospect – combined distribution



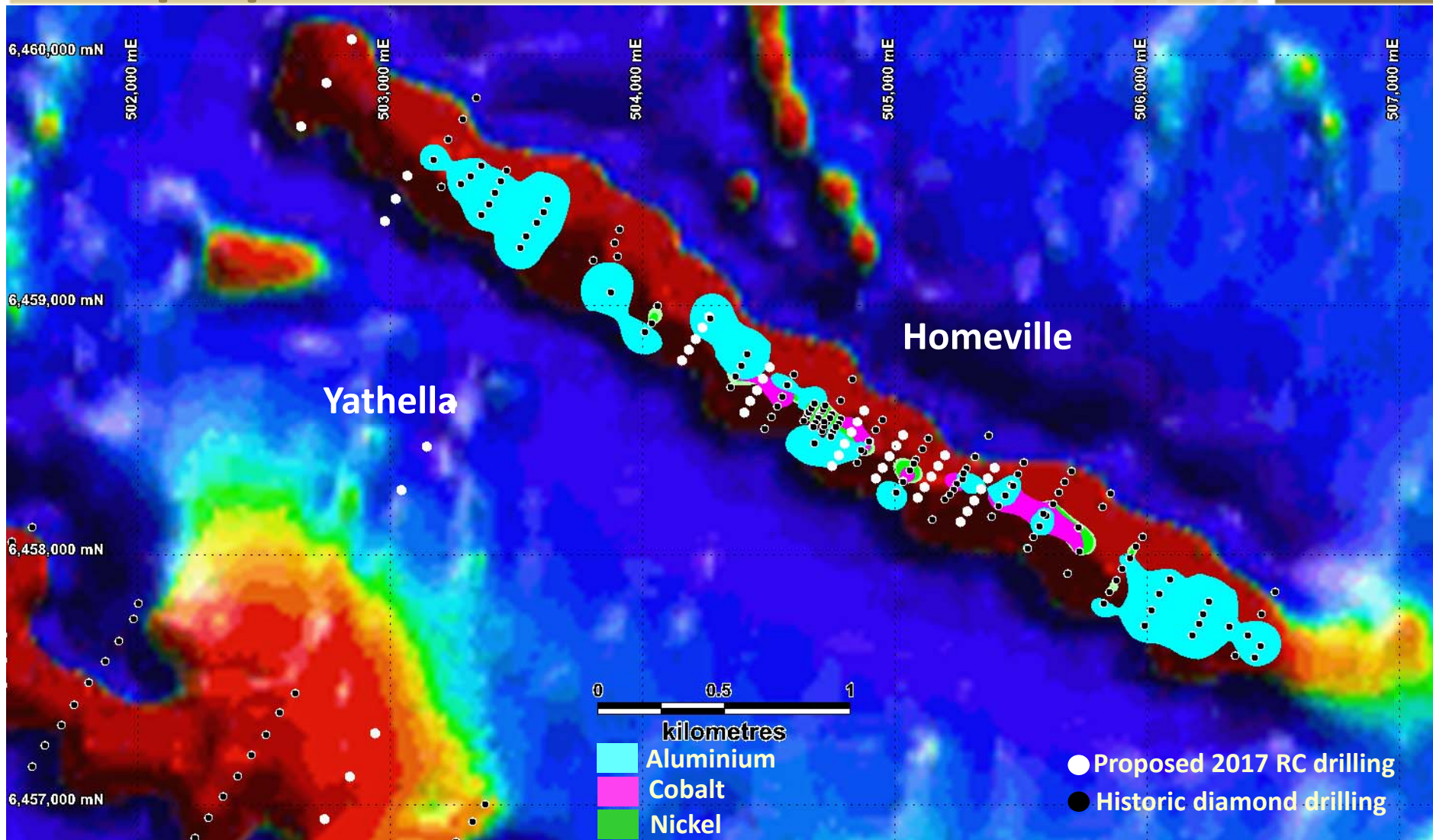
Collerina drill targets

- Focus within Homeville prospect to test for high cobalt enrichment within area of coincident, high magnetics, structural features and favourable mafic volcanic host rocks, indicated by previous drilling.
- Zone is 2 km long x 300 metres wide to 60 metres depth.
- 36 RC holes proposed to test zone lateral and depth continuity. Initial target areas with potential for coincident Al, Co, Ni.
- Also test Co potential at Yathella prospect area.
- 9 RC holes at 100 metre spacing to 60 metres depth are proposed to test between 1 km spaced previous air-core holes to max 40 metres depth.

Homeville Ni-Co zones and proposed RC holes



Homeville Ni-Co-Al zones and proposed RC drill holes



Collerina investor highlights



- JORC compliant resource of **16.3 million tonnes** at **0.93% nickel** and **0.05% cobalt** (cut-off 0.7% nickel). Remains **open at depth** and **along strike**.
- Remodelling of data with new drilling should significantly **increase current cobalt grade and tonnes** (previous resource modelling focussed on nickel only).
- Current resource estimated to contain **151,000 tonnes** of **nickel** and **8,100 tonnes** of **cobalt**.
- Opportunity for **3 revenue streams** - nickel, cobalt and high purity alumina.
- Previous CCAL test work returned excellent **96% average recovery of cobalt** with **low acid consumption**.
- Excellent access and logistics being only **1.5 hours drive from regional hub** of Dubbo.
- Opportunity to capitalise on **current strong and future** forecast cobalt price.

Statement of compliance



Information regarding the Mineral Resource at the Collerina project was prepared and first disclosed under the 2004 Edition of the 'Australasian Code for Reporting of Exploration Results, Mineral Resources and Ore Reserves'. It has not been updated since to comply with the 2012 Edition of the 'Australasian Code for Reporting of Exploration Results, Mineral Resources and Ore Reserves' on the basis that the Company is not aware of any new information or data that materially affects the information and, in the case of the resource estimate, all material assumptions and technical parameters underpinning the estimate continue to apply and have not materially changed.

The information in this report that relates to Exploration Results and Mineral Resources is based on information compiled by Augur staff and contractors and approved by Mr Michael Corey, PGeo., who is a Member of the Association of Professional Geoscientists of Ontario (APGO) in Canada. Michael Corey is a full-time employee of Augur and has sufficient experience which is relevant to the style of mineralisation and type of deposit under consideration and to the activity which he is undertaking to qualify as a Competent Person as defined in the 2012 Edition of the 'Australasian Code for Reporting of Exploration Results, Mineral Resources and Ore Reserves'. Michael Corey has consented to the inclusion in this report of the matters based on his information in the form and context in which they appear.

Appendix 1 JORC summary – Homeville

| JORC Category | Cut-off Grade Ni% | Tonnes Millions | Ni % | Co % | Fe % | Mg % |
|---------------|-------------------|-----------------|------|------|------|------|
| Indicated | 0.5 | 6.4 | 0.87 | 0.06 | 21 | 9.6 |
| | 0.7 | 4.4 | 0.99 | 0.06 | 20 | 8.8 |
| | 1.0 | 1.8 | 1.21 | 0.05 | 19 | 7.9 |
| Inferred | 0.5 | 20.7 | 0.78 | 0.05 | 18 | 9.9 |
| | 0.7 | 11.9 | 0.91 | 0.05 | 18 | 9.4 |
| | 1.0 | 3.1 | 1.16 | 0.05 | 17 | 8.8 |
| TOTAL | 0.5 | 27.2 | 0.80 | 0.05 | 19 | 9.8 |
| | 0.7 | 16.3 | 0.93 | 0.05 | 19 | 9.3 |
| | 1.0 | 4.9 | 1.18 | 0.05 | 18 | 8.6 |

Thank you



Augur Resources Ltd

Level 2, 66 Hunter St,
Sydney, NSW 2000, AUSTRALIA

Phone: +61 2 9300 3310

ASX code: AUK